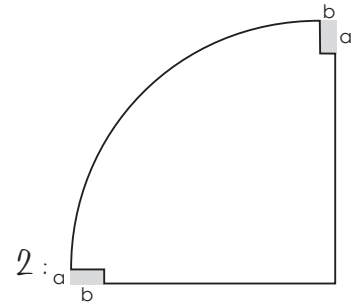


FLAT STONE CORNER SHELF

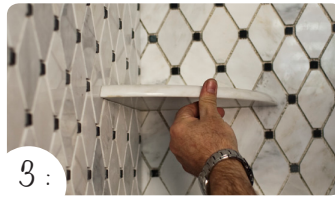
1 : Plan height for installation of the shower shelf. Cut tile to allow for width of shower shelf, as well as a 2" overlap on either side of the shelf to rest on the tile for a finished edge.



2 : Notch the shelf each edge for the tile overlay. Length a = the thickness of the wall tile, Length b = 2"



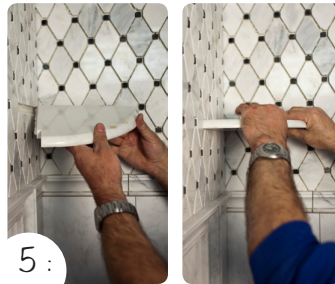
3 : Check for fit, making sure the back of the shelf is in contact with the backerboard and it overlaps the tile on each side.



4 : Apply 100% Silicone to both edges of the shelf.



5 : Press firmly in place applying even pressure.



6 : Apply wedges on the bottom, top, or both side of shelf to keep the shelf rigid in place and level.



Allow shelf to dry for 24 hours.

7 : Remove wedges from the shelf and apply a bead of silicone to the top of the shelf.



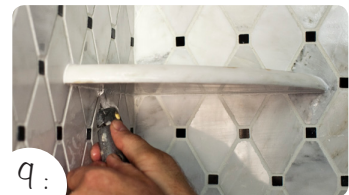
8 : Use a wet finger to smooth the bead and a damp sponge to clean the excess from the tile.



9 : Remove the remaining wedges and if necessary use a utility knife to scrape any excess Silicone from the under side of the shelf. Apply another thin bead of Caulk to the bottom edge, and repeat step 8.



Allow silicone to dry for 24 hours before exposing the shelf to water.



TOOLS & SUPPLIES :



Antibacterial Cleaner



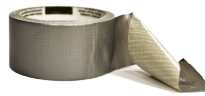
Pro - Caulk



Caulk Gun



Sponge



Duct Tape